

Time Signatures - $\frac{2}{4}$

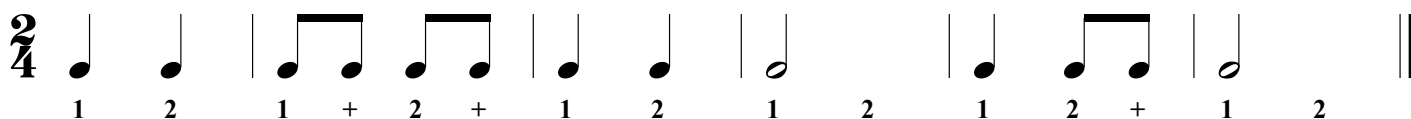


In $\frac{2}{4}$ time there are two beats in each measure.

The quarter note gets one beat.

Rhythmic values $\left[\begin{array}{l} \text{An eighth note } (\text{♪}) = 1/2 \text{ beat} \\ \text{A quarter note } (\text{♩}) = 1 \text{ beat} \\ \text{A half note } (\text{♩}) = 2 \text{ beats} \end{array} \right.$

1. Clap the rhythm while counting the beats out loud.

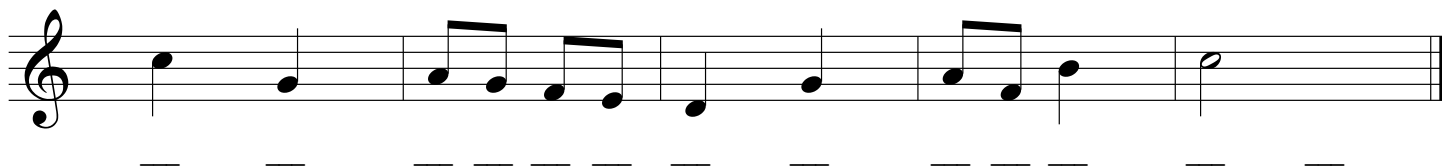


2. Write the count below the notes and then clap the rhythm while counting the beats out loud.

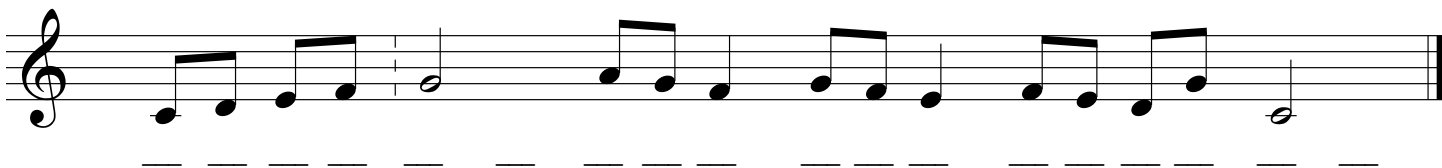


3. Write a $\frac{2}{4}$ time signature after the clef sign.

Write the count below the notes and then clap the rhythm while counting the beats out loud.



4. Write a $\frac{2}{4}$ time signature after the clef sign. Write in the count below the notes. Draw the missing bar lines.



5. Write in the count below the notes and add the missing barlines.

